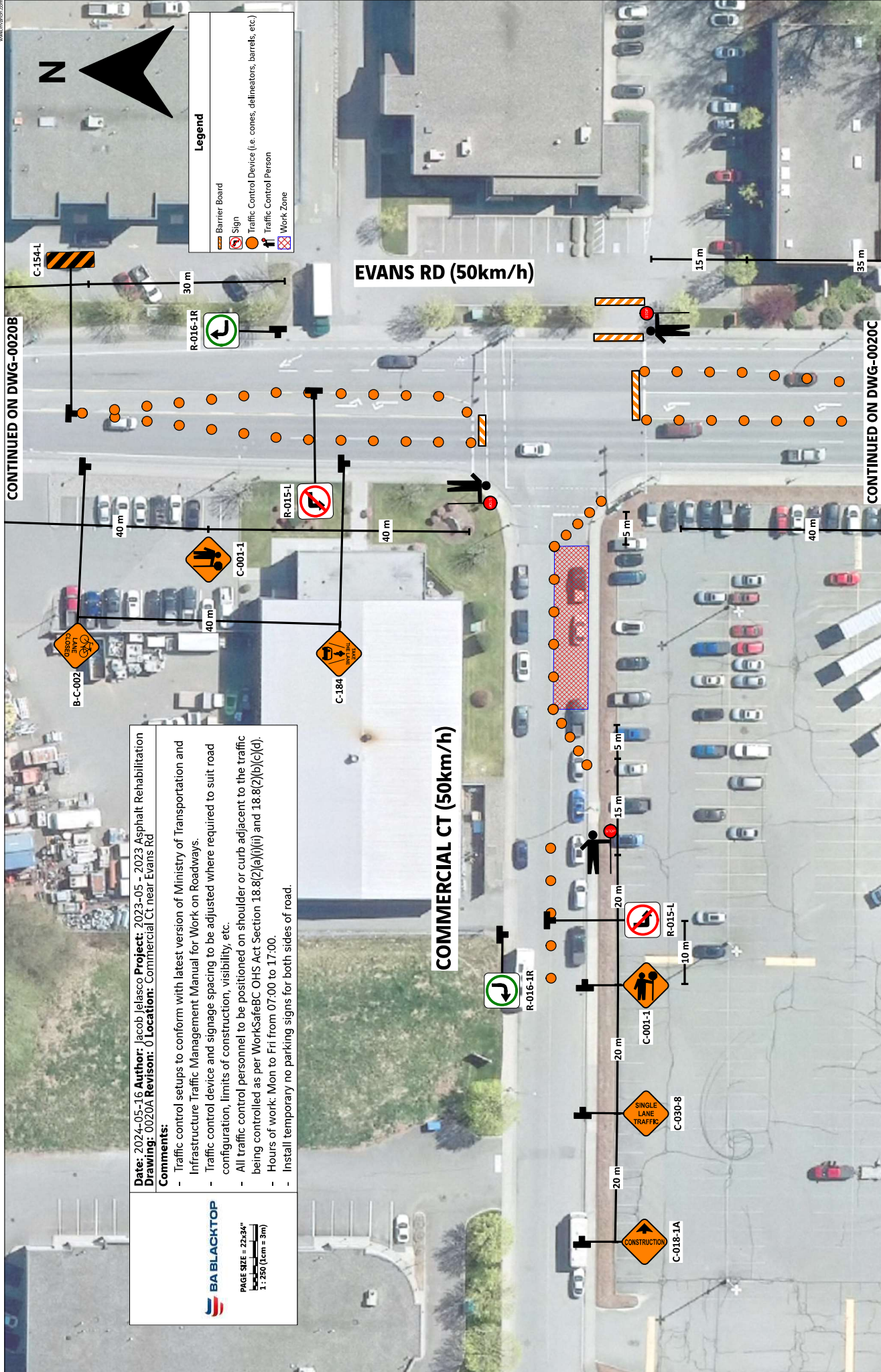




Legend

	Barrier Board
	Sign
	Traffic Control Device (i.e. cones, delineators, barrels, etc.)
	Traffic Control Person
	Work Zone



CONTINUED ON DWG-0020B

CONTINUED ON DWG-0020C

Date: 2024-05-16 **Author:** Jacob Jelasco **Project:** 2023-05 - 2023 Asphalt Rehabilitation
Drawing: 0020A **Revision:** 0 **Location:** Commercial Ct near Evans Rd

Comments:

- Traffic control setups to conform with latest version of Ministry of Transportation and Infrastructure Traffic Management Manual for Work on Roadways.
- Traffic control device and signage spacing to be adjusted where required to suit road configuration, limits of construction, visibility, etc.
- All traffic control personnel to be positioned on shoulder or curb adjacent to the traffic being controlled as per WorkSafeBC OHS Act Section 18.8(2)(a)(i) and 18.8(2)(b)(c)(d).
- Hours of work: Mon to Fri from 07:00 to 17:00.
- Install temporary no parking signs for both sides of road.

EVANS RD (50km/h)

COMMERCIAL CT (50km/h)

C-154-1

R-016-1R

R-015-1

B-C-002

C-001-1

C-184

15 m

35 m

40 m

40 m

5 m

40 m

5 m

15 m

20 m

20 m

10 m

20 m

20 m

20 m

20 m

20 m

20 m

20 m

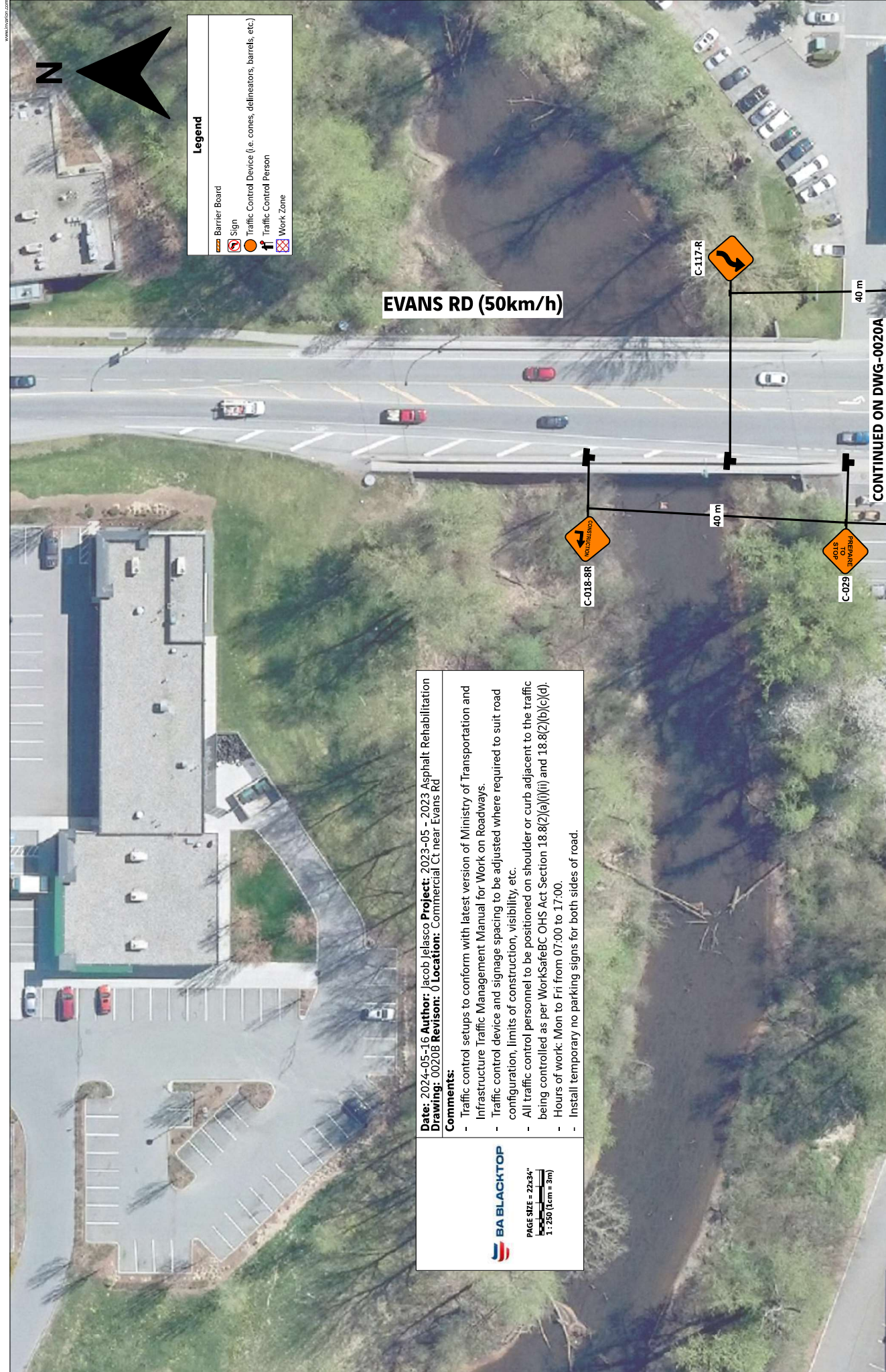
R-016-1R

R-015-1

C-001-1

C-030-8

C-018-1A



Legend	
	Barrier Board
	Sign
	Traffic Control Device (i.e. cones, delineators, barrels, etc.)
	Traffic Control Person
	Work Zone

EVANS RD (50km/h)

CONTINUED ON DWG-0020A

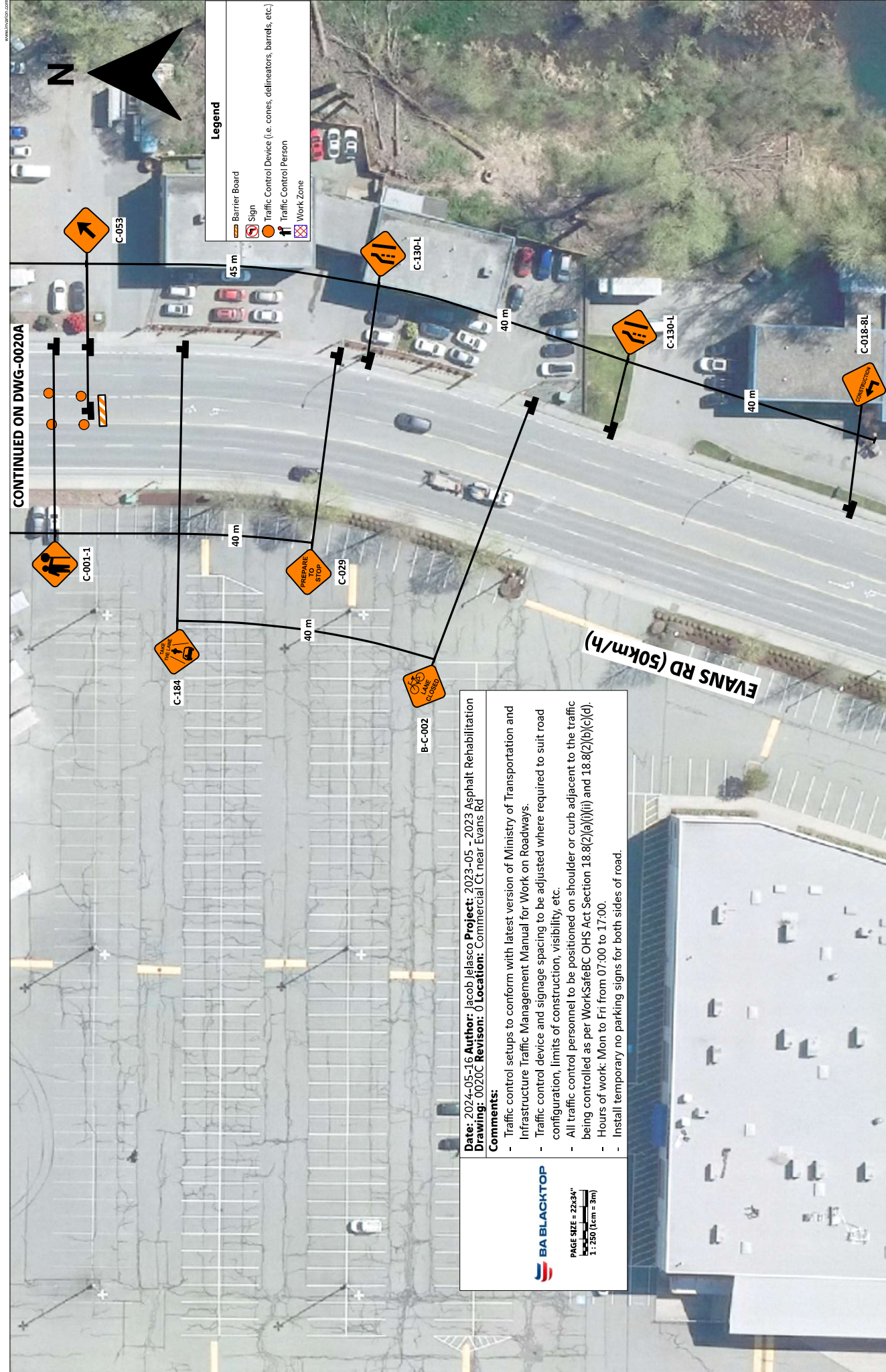
Date: 2024-05-16 **Author:** Jacob Jelasco **Project:** 2023-05 - 2023 Asphalt Rehabilitation
Drawing: 0020B **Revision:** 0 **Location:** Commercial Ct near Evans Rd

Comments:

- Traffic control setups to conform with latest version of Ministry of Transportation and Infrastructure Traffic Management Manual for Work on Roadways.
- Traffic control device and signage spacing to be adjusted where required to suit road configuration, limits of construction, visibility, etc.
- All traffic control personnel to be positioned on shoulder or curb adjacent to the traffic being controlled as per WorkSafeBC OHS Act Section 18.8(2)(a)(i)(ii) and 18.8(2)(b)(c)(d).
- Hours of work: Mon to Fri from 07:00 to 17:00.
- Install temporary no parking signs for both sides of road.

BA BLACKTOP

PAGE SIZE = 22x34"
 1 : 250 (1cm = 3m)



CONTINUED ON DWG-0020A



Legend

	Barrier Board
	Sign
	Traffic Control Device (i.e. cones, delineators, barrels, etc.)
	Traffic Control Person
	Work Zone








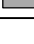
Date: 2024-05-16 **Author:** Jacob Jelasco **Project:** 2023-05 - 2023 Asphalt Rehabilitation
Drawing: 0020C **Revision:** 01 **Location:** Commercial Ct near Evans Rd

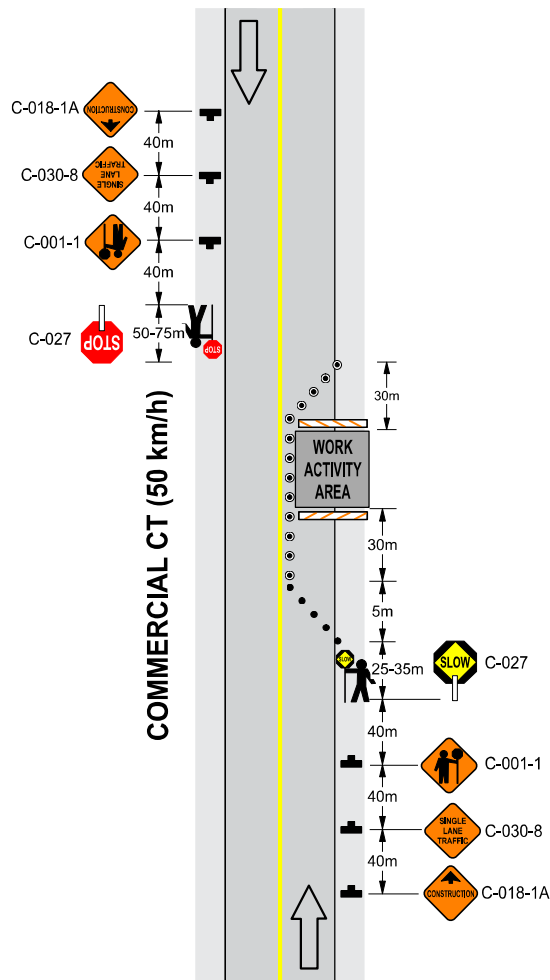
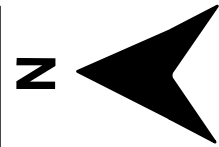
Comments:


- Traffic control setups to conform with latest version of Ministry of Transportation and Infrastructure Traffic Management Manual for Work on Roadways.
- Traffic control device and signage spacing to be adjusted where required to suit road configuration, limits of construction, visibility, etc.
- All traffic control personnel to be positioned on shoulder or curb adjacent to the traffic being controlled as per WorkSafeBC OHS Act Section 18.8(2)(a)(i)(ii) and 18.8(2)(b)(c)(d).
- Hours of work: Mon to Fri from 07:00 to 17:00.
- Install temporary no parking signs for both sides of road.

BA BLACKTOP

PAGE SIZE = 22x34"
 1 : 250 (1cm = 3m)

Legend	
	Barrier Board
	C-001-1
	C-018-1A
	C-027
	C-030-8
	Traffic Control Device
	Traffic Controller
	Work Area



	<p>Date: 2024-05-16 Author: Jacob Jelasco Project: 2023-05 - 2023 Asphalt Rehabilitation Drawing: 0019 Revision: 0 Location: Commercial Ct near Evans Rd</p>
	<p>Comments:</p> <ul style="list-style-type: none"> - Traffic control setups to conform with latest version of Ministry of Transportation and Infrastructure Traffic Management Manual for Work on Roadways. - Traffic control device and signage spacing to be adjusted where required to suit road configuration, limits of construction, visibility, etc. - All traffic control personnel to be positioned on shoulder or curb adjacent to the traffic being controlled as per WorkSafeBC OHS Act Section 18.8(2)(a)(i)(ii) and 18.8(2)(b)(c)(d). - Hours of work: Mon to Fri from 07:00 to 17:00. - Install temporary no parking signs for both sides of road.